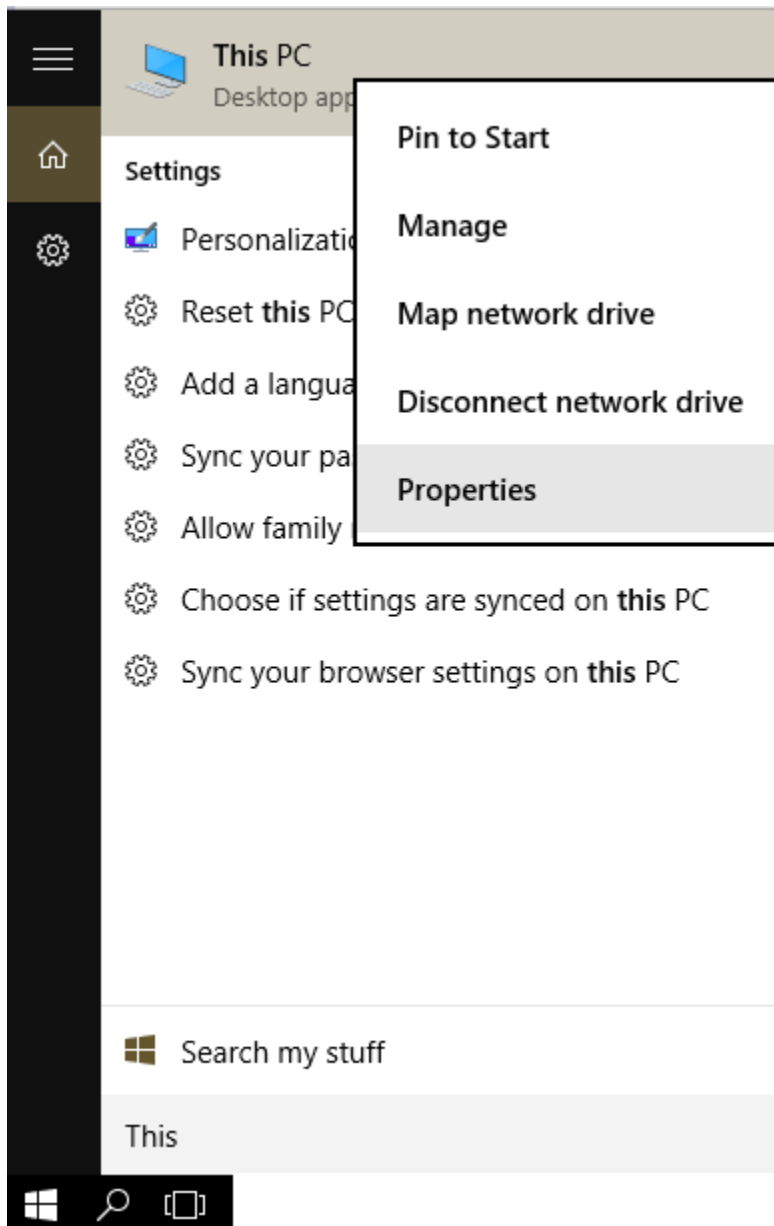


GLPI Windows Agent

Check machine operating system type 64-bit or 32-bit



System

Control Panel > All Control Panel Items > System

Control Panel Home

- Device Manager
- Remote settings
- System protection
- Advanced system settings

View basic information about your computer

Windows edition

Windows 10 Enterprise 2015 LTSB
© 2015 Microsoft Corporation. All rights reserved.

System

Processor:	Intel(R) Core(TM) i3-6100 CPU @ 3.70GHz 3.70 GHz
Installed memory (RAM):	8.00 GB
System type:	64-bit Operating System, x64-based processor
Pen and Touch:	No Pen or Touch Input is available for this Display

Computer name, domain, and workgroup settings

Computer name:	DESKTOP-NET0LVC
Full computer name:	DESKTOP-NET0LVC
Computer description:	
Workgroup:	WORKGROUP

Windows activation

Windows is activated [Read the Microsoft Software License Terms](#)

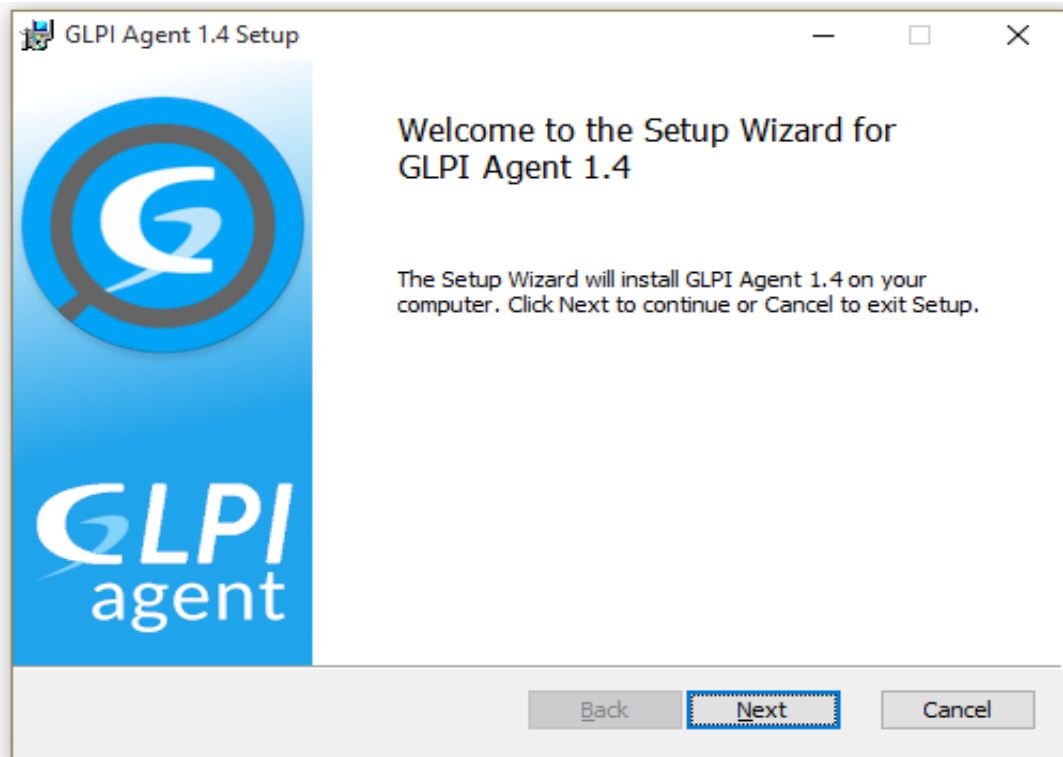
Product ID: 00329-60070-02069-AA487

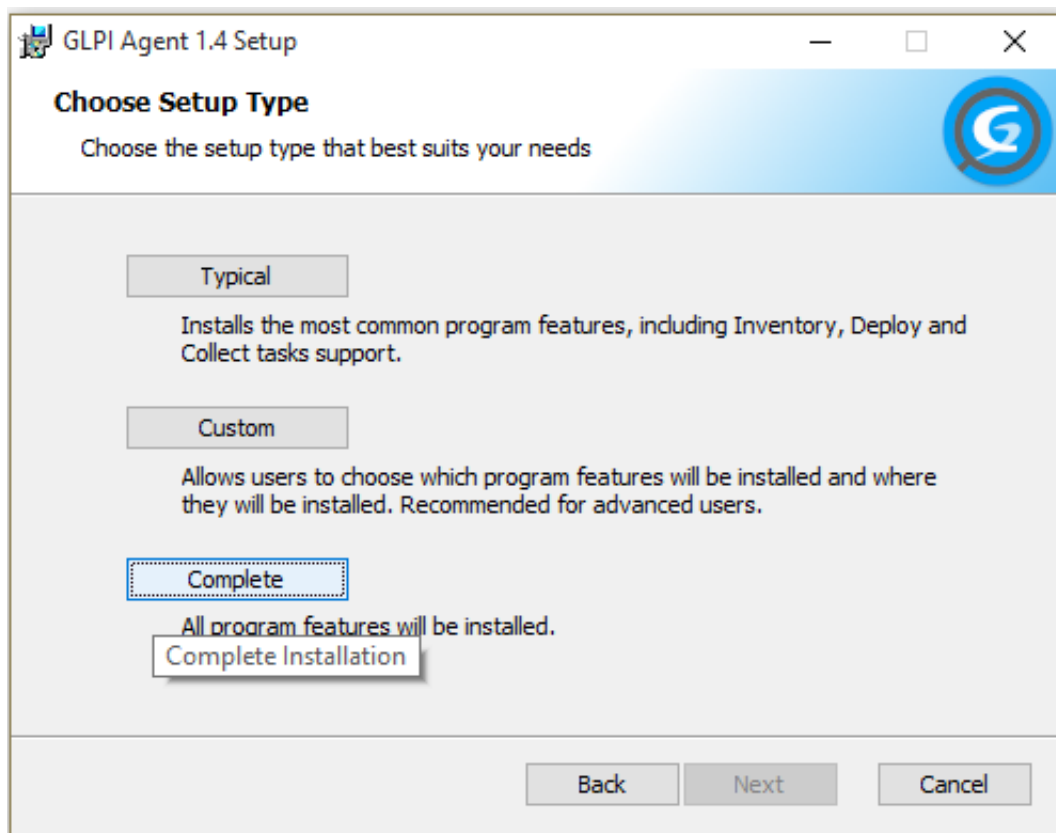
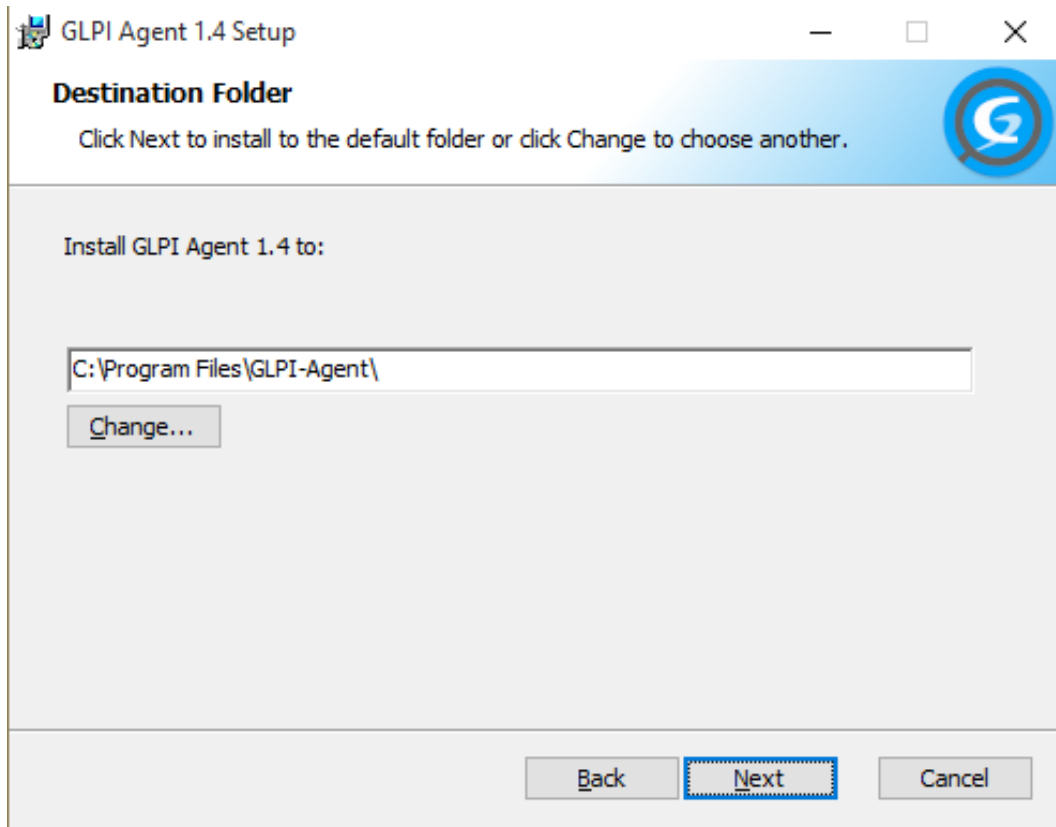
Download Windows **GLPI** Agent as per operating system installed in your machine.

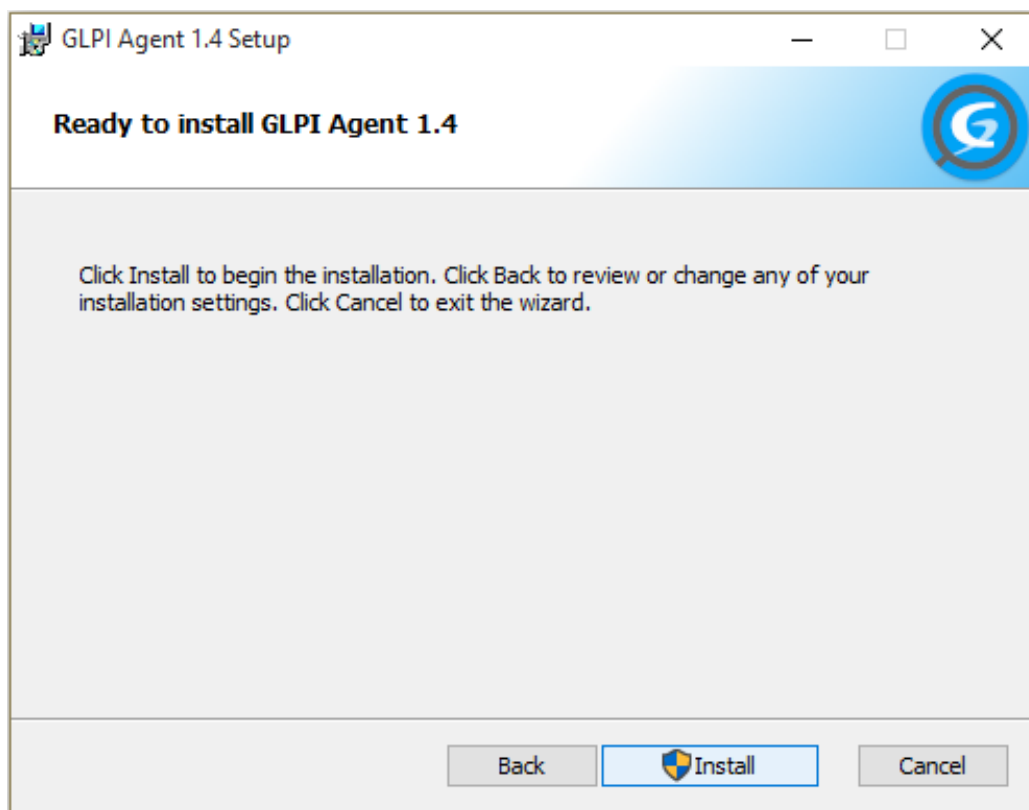
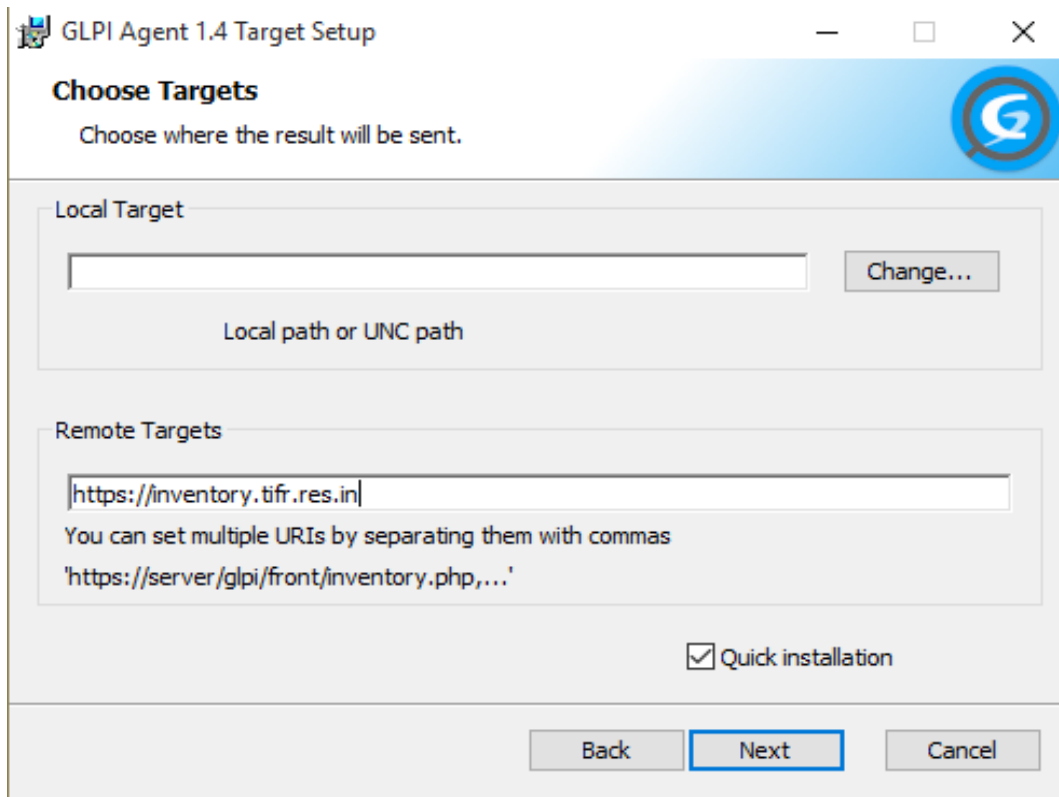
For 32-bit use "GLPI-Agent-1.4-x86.msi" download [here](#)

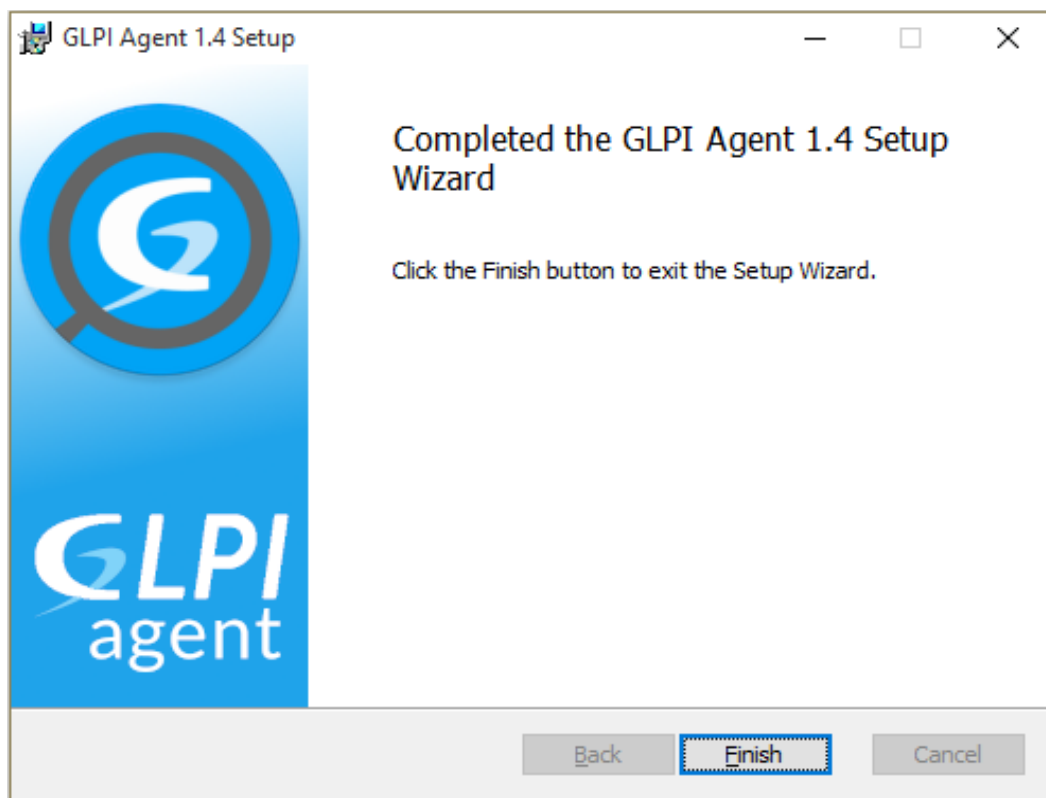
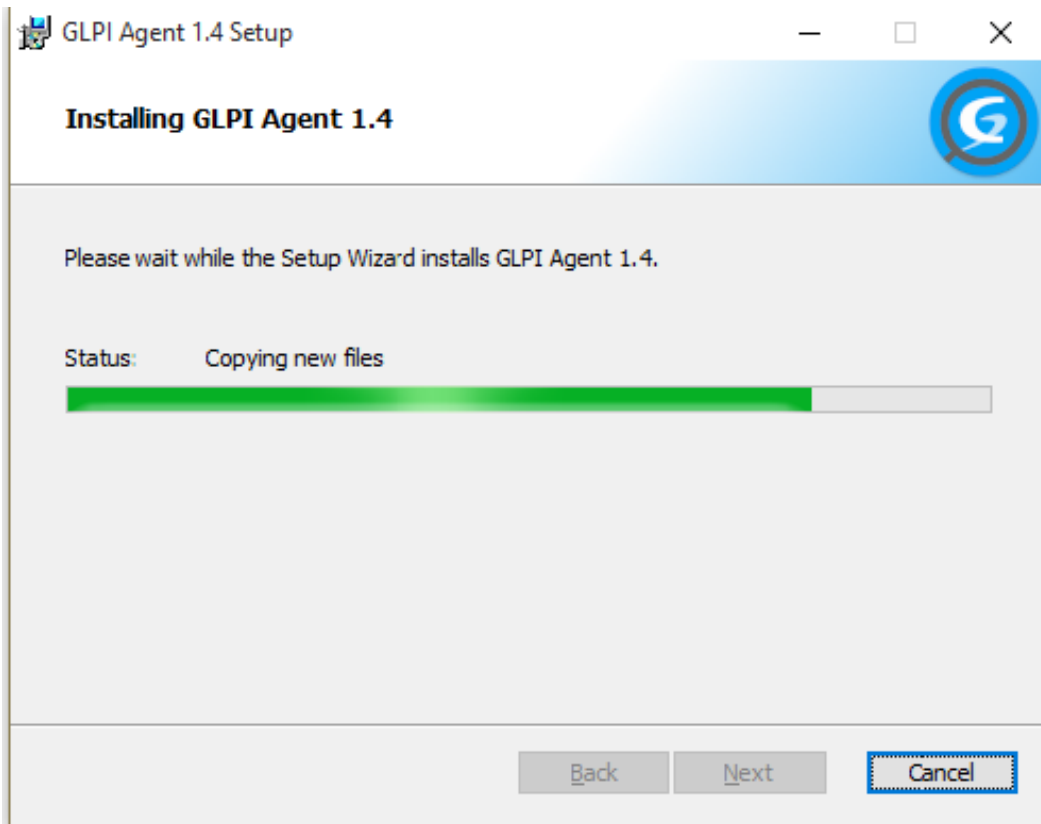
For 64-bit use "GLPI-Agent-1.4-x64.msi" download [here](#)

Follow the steps to install and configured agent in your windows desktop machine.









Click on “Finish”. Installation process ends here.
You don’t need to do anything more.

For more details check log files inside installation directory
E.g: C:\Program Files\GLPI-Agent\logs